



GateBerry

The gateway with the power and versatility of Linux and Raspberry Pi

Main features:



Seamless power continuity:

The uninterruptible power supply switches the **Raspberry Pi** to battery power during power outages, allowing operations to be safely terminated.

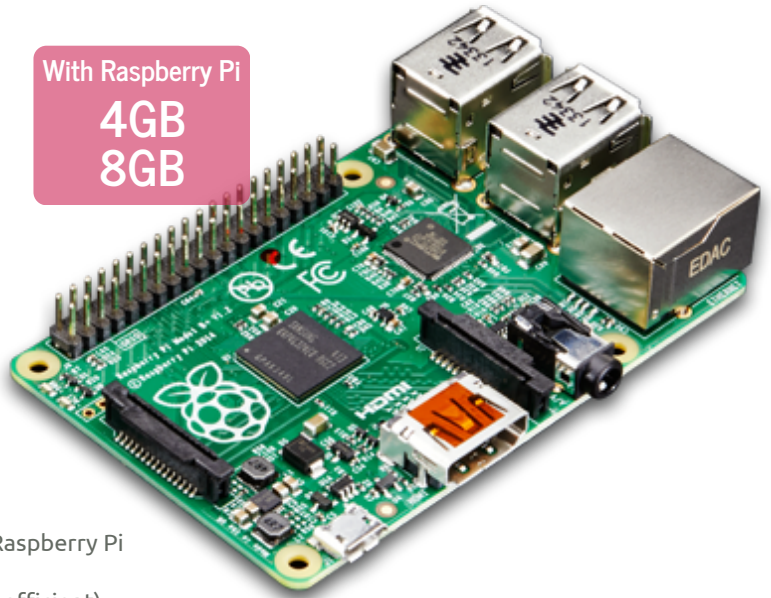
When power is restored, **GateBerry** returns to AC power, ensuring uninterrupted performance.

CoolDIN thermal dissipation system:

High-conductivity aluminum block in direct contact with the Raspberry Pi

Passive fanless design (zero maintenance)

Connection to the DIN rail as an external heatsink (40% more efficient)



DIN rail with CoolDIN



Versatile connectivity options:

GateBerry offers a wide range of connections—**USB, RS-485, Ethernet, and GPIO**—compatible with a multitude of industrial applications.

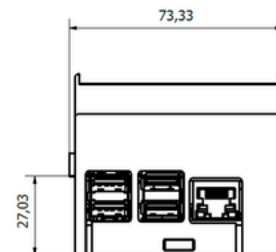
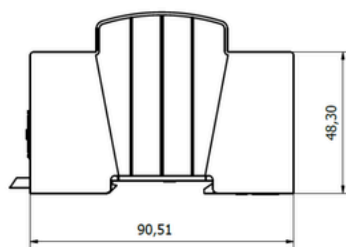
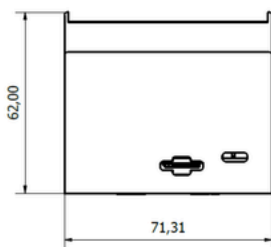
It integrates effortlessly with your existing infrastructure, allowing you to expand your **automation, monitoring, and data acquisition systems** without redesigning anything.



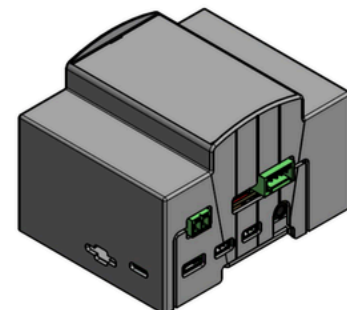
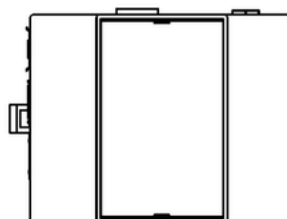
Longer battery life:

Equipped with a high-capacity rechargeable battery, **GateBerry** provides an extended power reserve.

The efficient battery management system maximizes battery life by ensuring the UPS is always ready.



Overall dimensions of the device



Micro SD



At Boot & Work Corp. S.L., we are committed to the promotion, development, manufacturing, and marketing of products based on open source technology, to liberalize the industrial sector and drive growth for our customers.

Our goal is to provide you with competitive automation, control, and data acquisition solutions for industrial and professional environments.

The balance between **quality and cost is very important** to us, which is why we offer you industrial-grade hardware at competitive prices.

By using open source solutions, we can offer more specifications at a better price.

Furthermore, open source solutions are **more flexible and accessible** than standard industry solutions, and the software **is license-free**.

QUALITY



RoHS
COMPLIANT



In compliance with:

EN61010-1 | EN61010-2-201 | EN61131-2:2007 (Clause 8: Zone A/B EMC and Clause 11: LVD) | EN61000-6-4:2007 + A1 2011 (Emissions) | EN 61000-6-2:2005 (Immunity) | EMC: FCC Part 15

Presence in more than 90 countries

CONTACT US



Our **sales, technical and support team** will assist you by phone, email or using the ticket system directly on our website.

Get in touch. We're here to help.



Camí del Grau, 25 Sant Fruitós de Bages
08272 (Barcelona)
Spain



industrialshields@industrialshields.com



Tel: (+34) 938 760 191



<https://www.industrialshields.com>